

# PHOTOMETRIC TEST REPORT

---

DECOR PRO ROUND  
ADJUSTABLE - TEXTURED WHITE  
- 4002787

astro

## DECOR PRO ROUND ADJUSTABLE -

astro

### LIGHT EFFICIENCY:

108 Lumen/Watt

### LIGHT QUALITY:

CRI: 95.9

### COLOR TEMPERATURE:

3020 K

OUTPUT: 1291 lm

PEAK: 6866 cd

POWER: 11.9 W

PF: 0.95



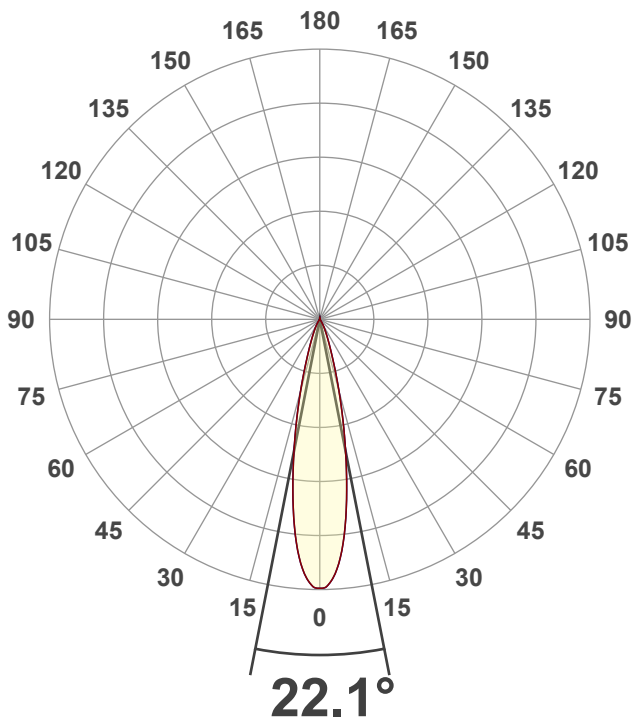
Tracking number: [n/a](#)

Product name:  
Decor Pro Round Adjustable - Textured  
White - 4002787

Item number:  
DRA-TW-HE30G1-15G1-X-D1

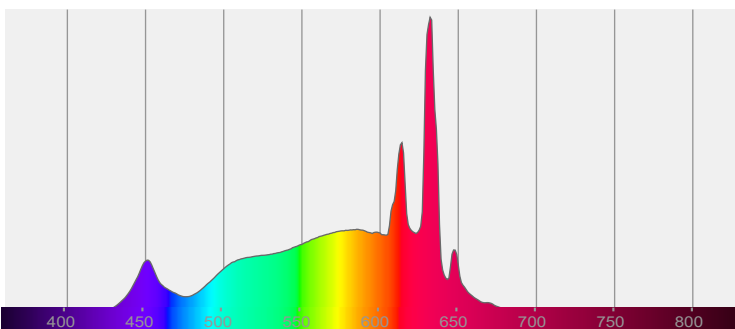
Date and time:  
20/12/2024 09:45:25

Description:  
IP20 LED Downlight

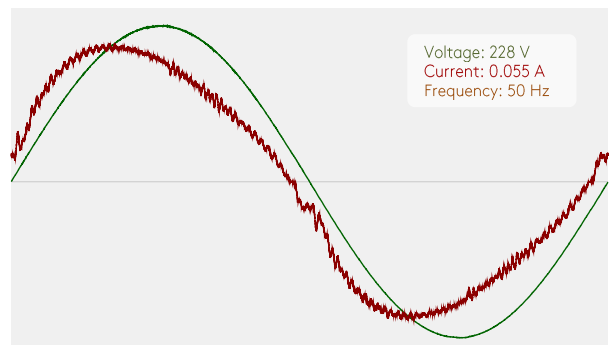


CIE 1931  
x: 0.437  
y: 0.407

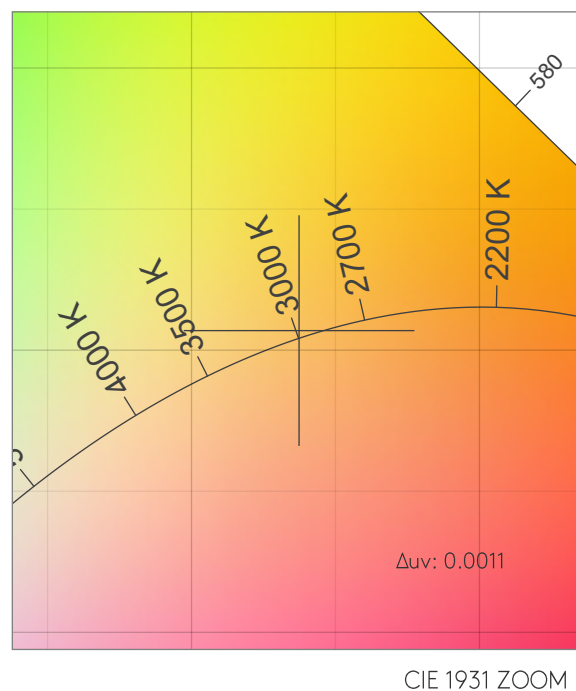
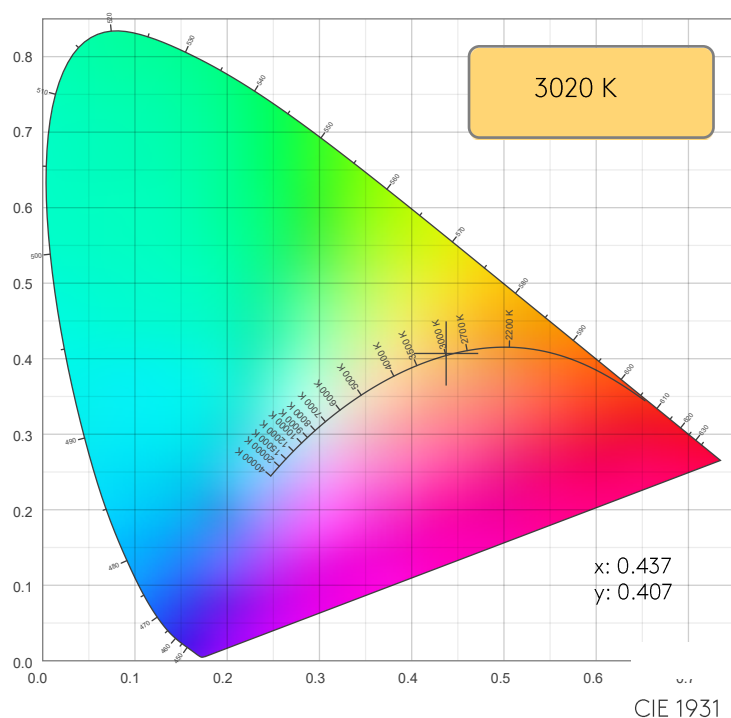
### SPECTRA



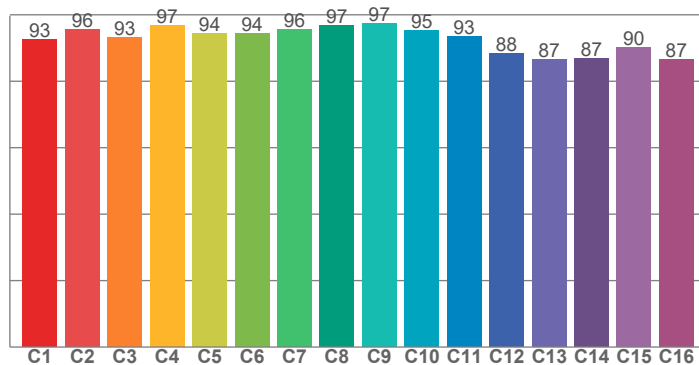
### POWER



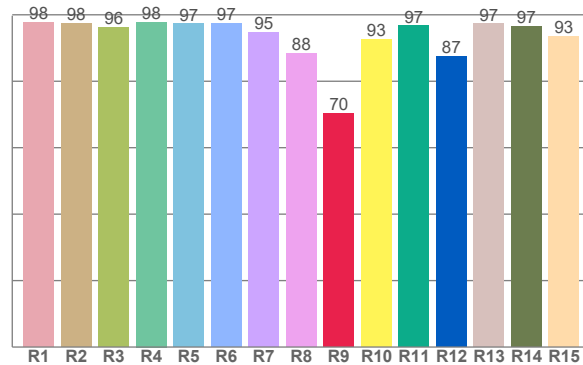
## COLOR DETAILS



TM30: 93.2



CRI: 95.9 (R1-R8)



CRI R values, only R1-R8 are used to calculate final CRI value

R1	R2	R3	R4	R5	R6	R7	R8	R9	R10	R11	R12	R13	R14	R15
97.7	97.5	96.3	97.8	97.3	97.4	94.6	88.4	70.4	92.7	96.7	87.5	97.3	96.5	93.5

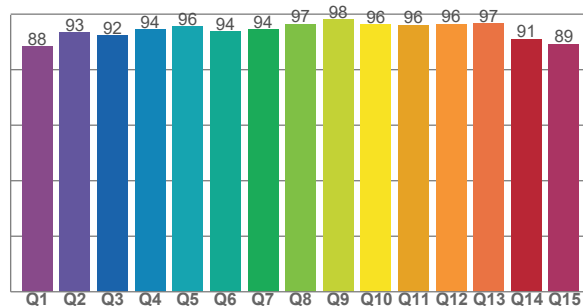
TM30 C values, 16 binned values out of total of 99 C values

C1	C2	C3	C4	C5	C6	C7	C8	C9	C10	C11	C12	C13	C14	C15	C16
92.6	95.6	93.2	96.8	94.4	94.4	95.7	96.7	97.3	95.1	93.5	88.3	86.5	86.9	90.2	86.5

CQS Q values

Q1	Q2	Q3	Q4	Q5	Q6	Q7	Q8	Q9	Q10	Q11	Q12	Q13	Q14	Q15
88.4	93.3	92.3	94.4	95.6	93.8	94.5	96.5	98.1	96.2	96.1	96.4	96.7	91.0	89.3

CQS: 93.4



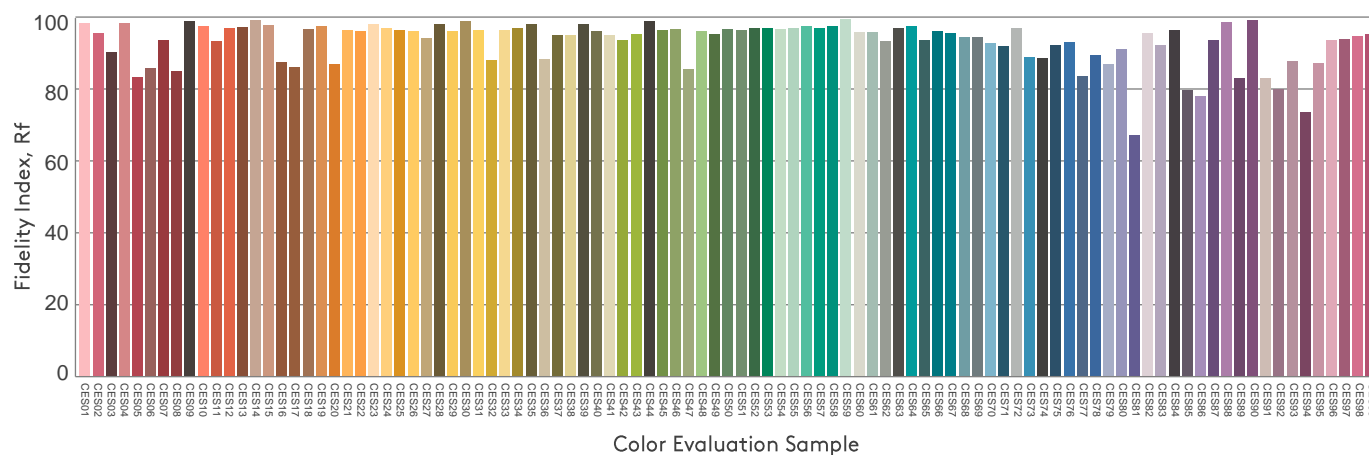
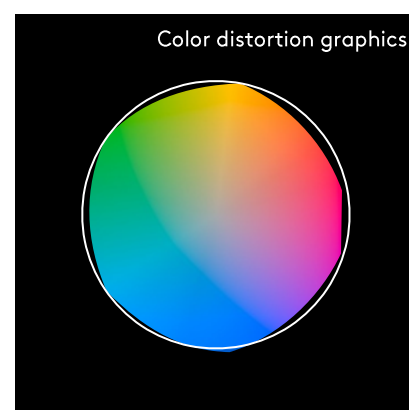
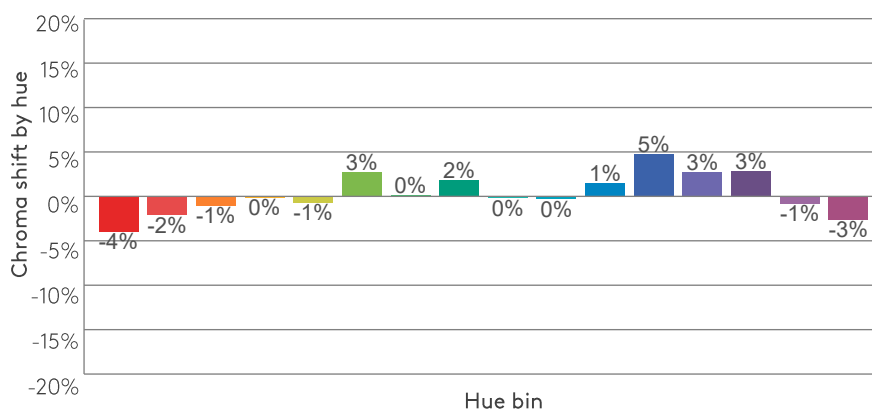
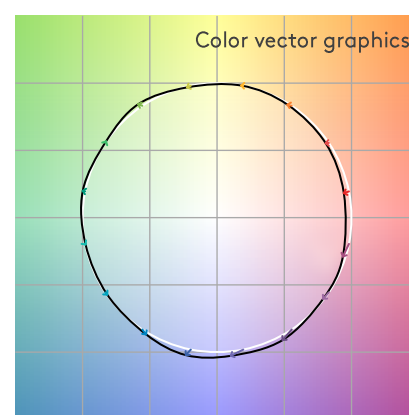
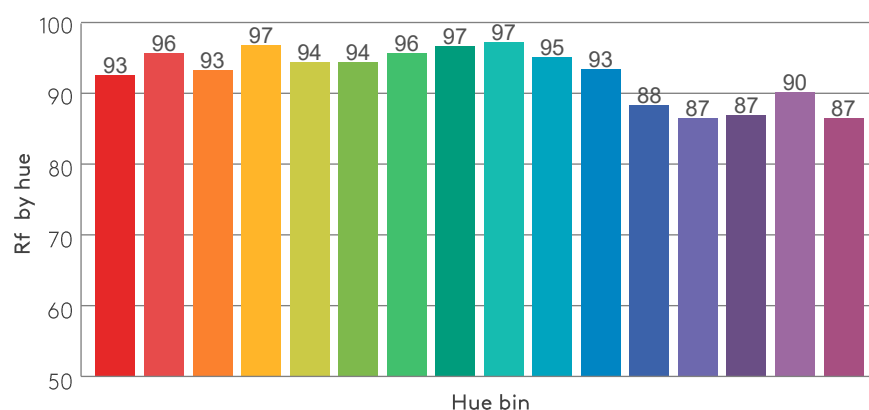
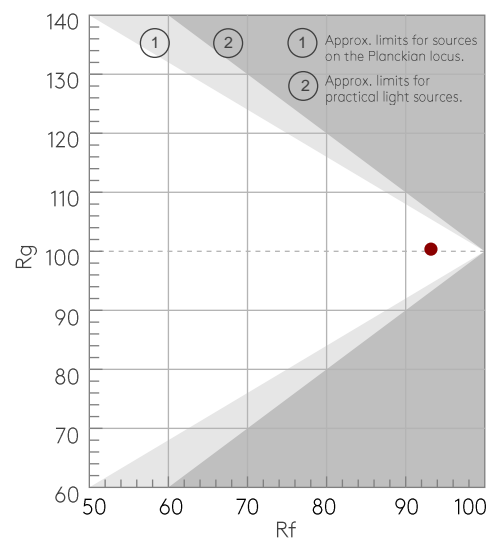
## COLOR PARAMETERS

Color temperature	Color rendering index	Red component	Color fidelity	Color gamut	Color quality scale	Color coordinate cie 1931	Color coordinate cie 1931	Color coordinate	Color coordinate	Color deviation from black body
CCT	CRI	CRI R9	TM30 Rf	TM30 Rg	CQS	x	y	u	v	Δuv
3020 K	95.9	70.4	93.2	100.4	93.4	0.437	0.407	0.250	0.348	0.0011

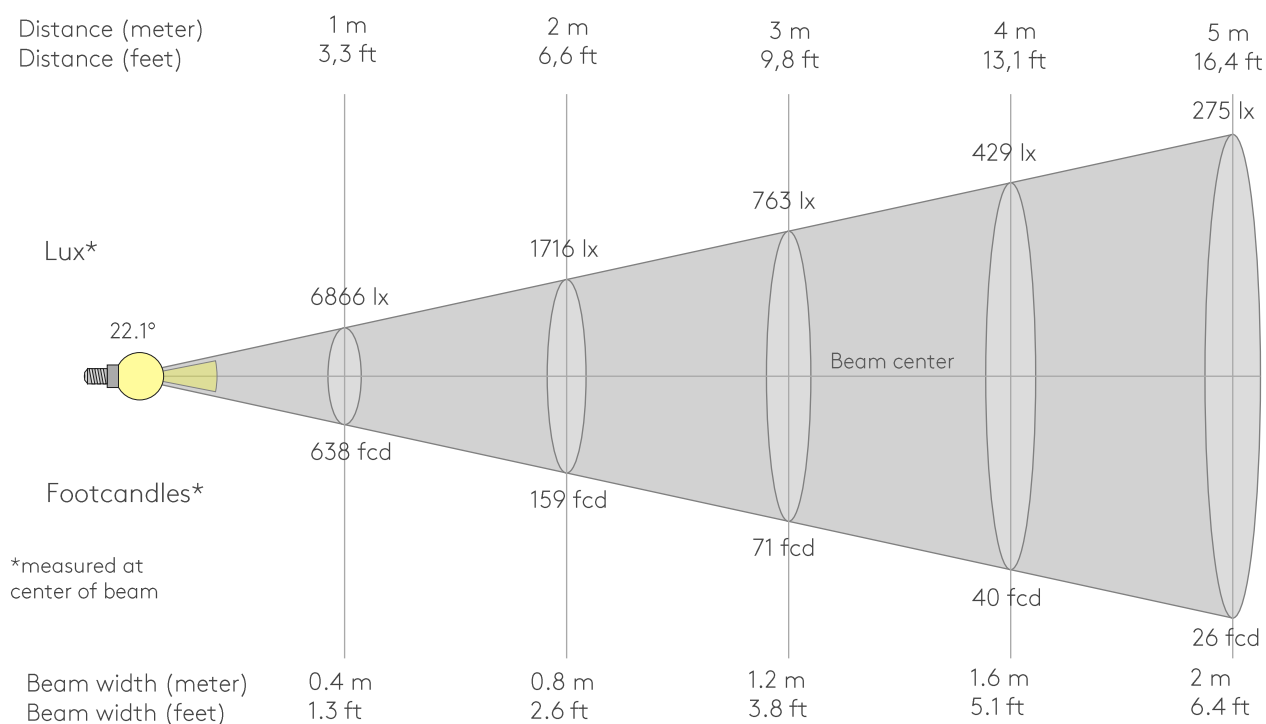
Rf 93.2  
Fidelity index Rf

Rg 100.4  
Gammut index Rg

Hue Bin	R <sub>f</sub>	Graphic shifts (%)	
		Chroma	Hue
1	93	-4%	-1%
2	96	-2%	1%
3	93	-1%	3%
4	97	0%	1%
5	94	-1%	3%
6	94	3%	2%
7	96	0%	-1%
8	97	2%	0%
9	97	0%	0%
10	95	0%	2%
11	93	1%	4%
12	88	5%	-3%
13	87	3%	-10%
14	87	3%	-10%
15	90	-1%	-6%
16	87	-3%	-10%



## BEAM DETAILS



Beam intensities from 1-20m

1m	2m	3m	4m	5m	6m	7m	8m	9m	10m	11m	12m	13m	14m	15m	16m	17m	18m	19m	20m
3.3ft	6.6ft	9.8ft	13.1ft	16.4ft	19.7ft	23ft	26.2ft	29.5ft	32.8ft	36.1ft	39.4ft	42.7ft	45.9ft	49.2ft	52.5ft	55.8ft	59.1ft	62.3ft	65.6ft
6866lx	1716lx	763lx	429lx	275lx	191lx	140lx	107lx	85lx	69lx	57lx	48lx	41lx	35lx	31lx	27lx	24lx	21lx	19lx	17lx
637.8fcd	159.5fcd	70.9fcd	39.9fcd	25.5fcd	17.7fcd	13fcd	10fcd	7.9fcd	6.4fcd	5.3fcd	4.4fcd	3.8fcd	3.3fcd	2.8fcd	2.5fcd	2.2fcd	2fcd	1.8fcd	1.6fcd

Intensities in 0° c-plane

0°	2°	4°	6°	8°	10°	12°	14°	16°	18°	20°	22°	24°	26°	28°	30°	32°	34°	36°	38°
6866	6766	6380	5733	4870	3924	3030	2240	1583	1091	773	560	410	302	223	161	112	77	48	30
100%	99%	93%	83%	71%	57%	44%	33%	23%	16%	11%	8%	6%	4%	3%	2%	2%	1%	1%	0%

Intensities in 90° c-plane

0°	2°	4°	6°	8°	10°	12°	14°	16°	18°	20°	22°	24°	26°	28°	30°	32°	34°	36°	38°
6866	6766	6380	5733	4870	3924	3030	2240	1583	1091	773	560	410	302	223	161	112	77	48	30
100%	99%	93%	83%	71%	57%	44%	33%	23%	16%	11%	8%	6%	4%	3%	2%	2%	1%	1%	0%

Intensities in 180° c-plane

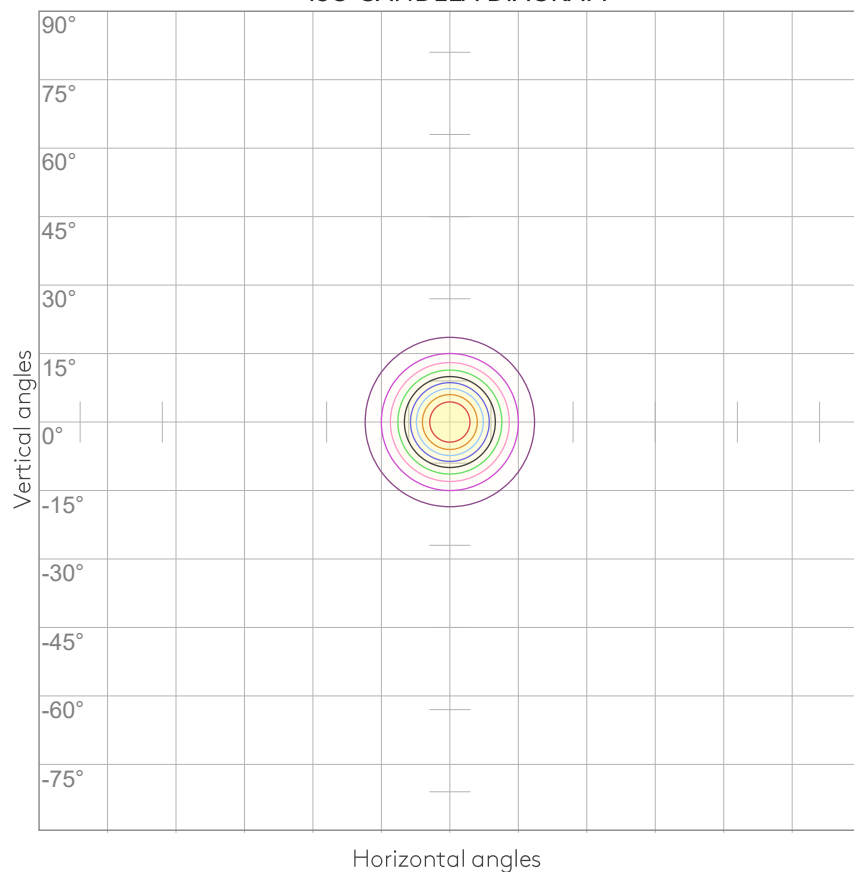
0°	2°	4°	6°	8°	10°	12°	14°	16°	18°	20°	22°	24°	26°	28°	30°	32°	34°	36°	38°
6866	6766	6380	5733	4870	3924	3030	2240	1583	1091	773	560	410	302	223	161	112	77	48	30
100%	99%	93%	83%	71%	57%	44%	33%	23%	16%	11%	8%	6%	4%	3%	2%	2%	1%	1%	0%

Intensities in 270° c-plane

0°	2°	4°	6°	8°	10°	12°	14°	16°	18°	20°	22°	24°	26°	28°	30°	32°	34°	36°	38°
6866	6766	6380	5733	4870	3924	3030	2240	1583	1091	773	560	410	302	223	161	112	77	48	30
100%	99%	93%	83%	71%	57%	44%	33%	23%	16%	11%	8%	6%	4%	3%	2%	2%	1%	1%	0%

Beam angle 50%	Field angle 10%	Cutoff angle 2,5%	Intensity ratio in 120° cone	Intensity ratio in 90° cone
22.1°	41.5°	59.3°	98.1%	97.6%

ISO CANDELA DIAGRAM



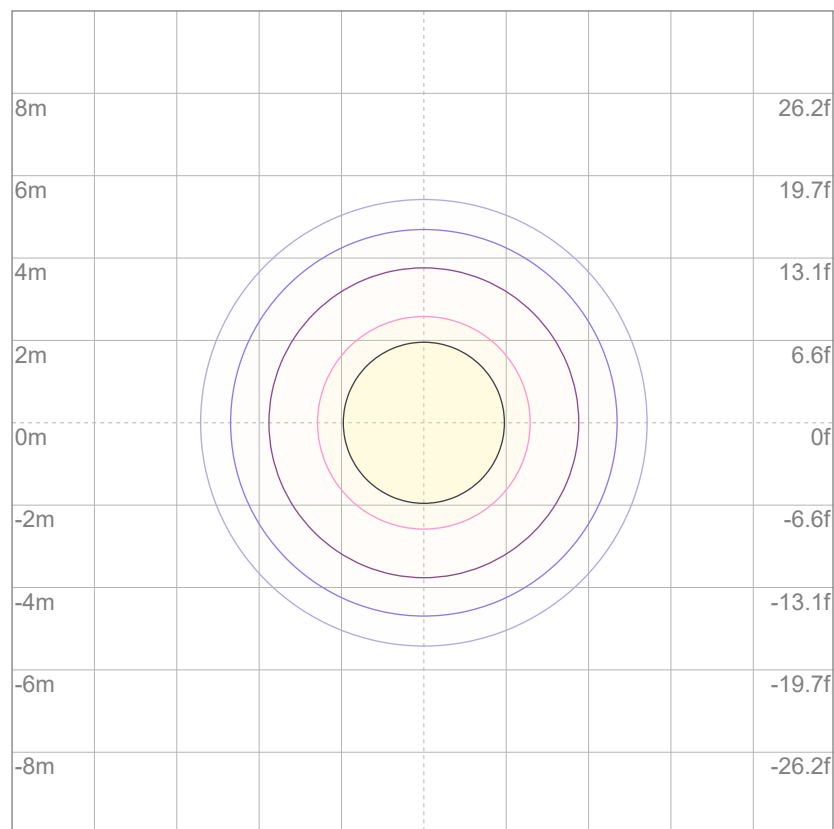
10%	687 cd
20%	1373 cd
30%	2060 cd
40%	2746 cd
50%	3433 cd
60%	4119 cd
70%	4806 cd
80%	5492 cd
90%	6179 cd

Conditions:

Number of c-planes: 8

Candela at center: 6866 cd

ISO LUX DIAGRAM



3%	2.06 lx
5%	3.43 lx
10%	6.87 lx
30%	20.6 lx
50%	{LUX_10M50} lx

Conditions:

Number of c-planes: 8

Lux at center: 68.7 lx

Lux distribution on a surface  
when lamp is mounted at 10  
meters from the surface.

## UGR

## GLARE EVALUATION ACCORDING TO UGR

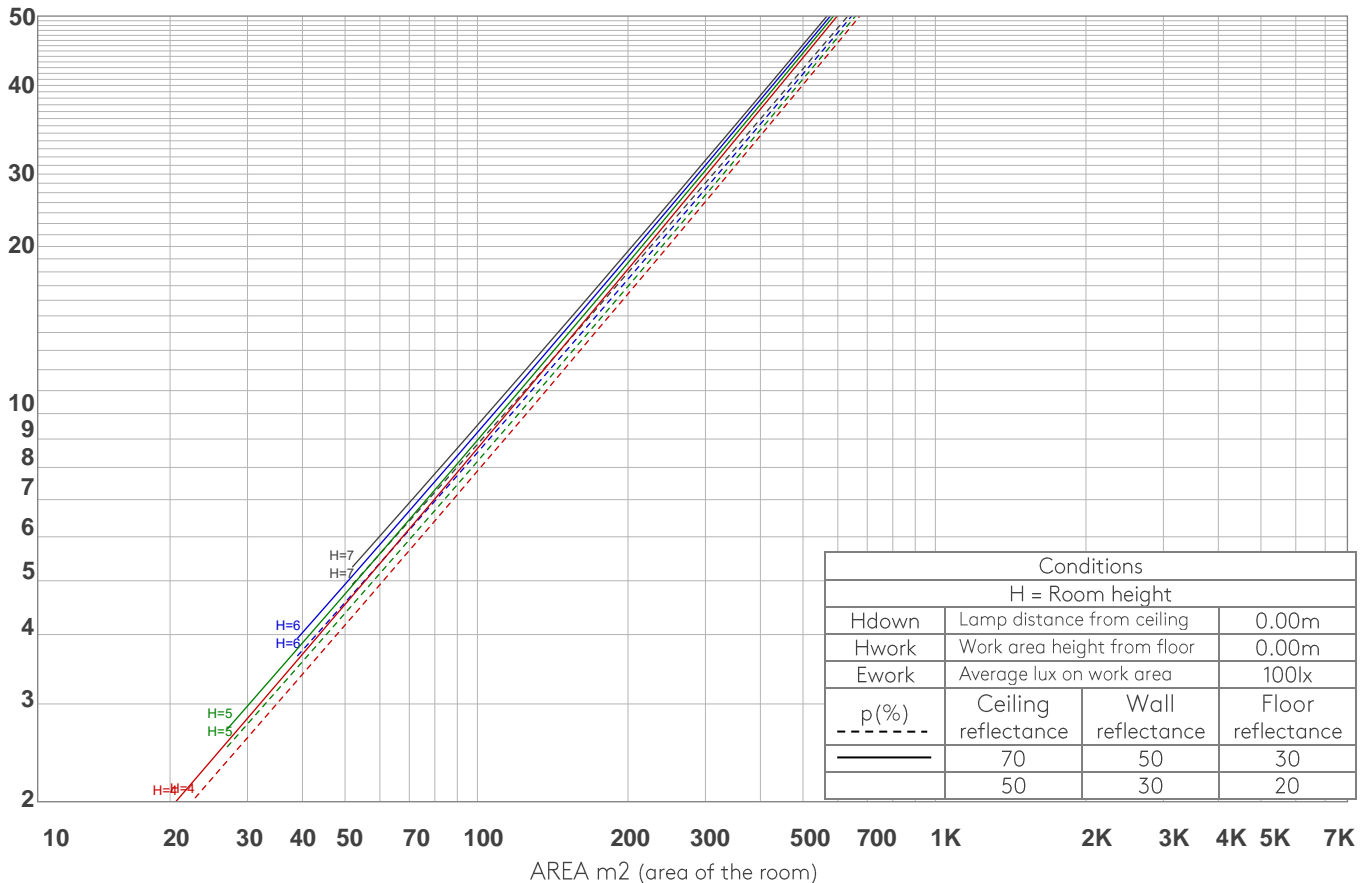
p Ceiling		70	70	50	50	30	70	70	50	50	30
p Walls		50	30	50	30	30	50	30	50	30	30
p Floor		20	20	20	20	20	20	20	20	20	20
Room size X      Y		Viewing direction at right angles to lamp axis					Viewing direction parallel to lamp axis				
2H	2H	12.0	12.3	12.0	12.5	12.7	12.0	12.3	12.0	12.5	12.7
	3H	11.9	12.5	12.3	12.7	12.9	11.9	12.5	12.3	12.7	12.9
	4H	12.2	12.7	12.6	13.0	13.2	12.2	12.7	12.6	13.0	13.2
	6H	12.8	13.2	13.1	13.6	13.9	12.8	13.2	13.1	13.6	13.9
	8H	13.2	13.6	13.5	14.0	14.4	13.2	13.6	13.5	14.0	14.4
	12H	13.8	14.2	14.2	14.6	15.0	13.8	14.2	14.2	14.6	15.0
4H	2H	11.7	12.2	12.1	12.5	12.7	11.7	12.2	12.1	12.5	12.7
	3H	12.1	12.5	12.4	12.8	13.3	12.1	12.5	12.4	12.8	13.3
	4H	12.4	12.8	12.9	13.3	13.8	12.4	12.8	12.9	13.3	13.8
	6H	13.3	13.7	13.8	14.1	14.4	13.3	13.7	13.8	14.1	14.4
	8H	13.9	14.3	14.4	14.6	15.0	13.9	14.3	14.4	14.6	15.0
	12H	14.7	15.0	15.2	15.4	15.9	14.7	15.0	15.2	15.4	15.9
8H	4H	12.6	13.0	13.2	13.4	13.8	12.6	13.0	13.2	13.4	13.8
	6H	13.8	14.0	14.3	14.5	15.1	13.8	14.0	14.3	14.5	15.1
	8H	14.7	14.9	15.2	15.4	16.0	14.7	14.9	15.2	15.4	16.0
	12H	15.8	15.9	16.4	16.5	17.1	15.8	15.9	16.4	16.5	17.1
12H	4H	12.7	13.0	13.2	13.4	13.9	12.7	13.0	13.2	13.4	13.9
	6H	14.0	14.2	14.5	14.7	15.4	14.0	14.2	14.5	14.7	15.4
	8H	14.9	15.1	15.5	15.6	16.2	14.9	15.1	15.5	15.6	16.2
Variation of the observer position for the luminaire distance S											
S = 1.0H		2.0 / -0.6					2.0 / -0.6				
S = 1.5H		3.8 / -0.7					3.8 / -0.7				
S = 2.0H		5.4 / -0.9					5.4 / -0.9				
Standard table		n/a					n/a				
Correction summand		n/a					n/a				
Corrected glare indices referring to 1291 lm total luminous flux											

## COEFFICIENTS OF UTILIZATION

Ceiling reflectance	80				70				50			30			10			0
Wall reflectance	70	50	30	10	70	50	30	10	50	30	10	50	30	10	50	30	10	0
Floor reflectance	20	20	20	20	20	20	20	20	20	20	20	20	20	20	20	20	20	0
RCR	(RCR: Room Cavity Ratio) Room Values are expressed as percentage of Lumens delivered to the task surface																	
0	119	119	119	119	116	116	116	116	110	110	110	105	105	105	101	101	101	99
1	115	113	111	109	112	110	109	107	106	105	104	102	101	100	99	98	97	95
2	111	107	104	102	109	106	103	101	102	100	98	99	97	96	96	95	94	92
3	107	103	99	96	106	101	98	96	99	96	94	96	94	92	94	92	91	90
4	104	99	95	92	103	98	94	92	96	93	90	94	91	89	92	90	88	87
5	101	96	91	88	100	95	91	88	93	90	87	91	89	86	90	87	86	84
6	98	92	88	85	97	92	88	85	90	87	84	89	86	84	88	85	83	82
7	96	90	86	83	95	89	85	82	88	84	82	87	84	81	86	83	81	80
8	93	87	83	80	92	86	83	80	85	82	80	84	81	79	84	81	79	78
9	91	85	81	78	90	84	80	78	83	80	78	82	79	77	82	79	77	76
10	89	82	79	76	88	82	78	76	81	78	76	81	78	75	80	77	75	74

LAMPS (number of lamps)

## LUMINAIRE BUDGETARY DIAGRAM



## ZONAL LUMEN SUMMARY

0°-10°	10°-20°	20°-30°	30°-40°	40°-50°	50°-60°	60°-70°	70°-80°	80°-90°
509 lm	531 lm	172 lm	43.4 lm	7.13 lm	3.60 lm	2.62 lm	2.54 lm	2.55 lm
90°-100°	100°-110°	110°-120°	120°-130°	130°-140°	140°-150°	150°-160°	160°-170°	170°-180°
2.56 lm	2.50 lm	2.36 lm	2.09 lm	2.02 lm	1.96 lm	1.80 lm	1.22 lm	0.341 lm



FLICKER

FLICKER CURVE (COMPLETE SAMPLED)



FLICKER FRAME (FRAME OF ONE FLICKER



FLICKER FFT (FREQUENCY SCOPE OF FLICKER



FLICKER RESULTS:

Flicker frequency:	n/a Hz
Flicker index:	n/a
Flicker percentage:	n/a %
SVM: (Visual flicker)	n/a

FLICKER CONDITIONS:

Sample rate:	n/a samples/second
--------------	--------------------